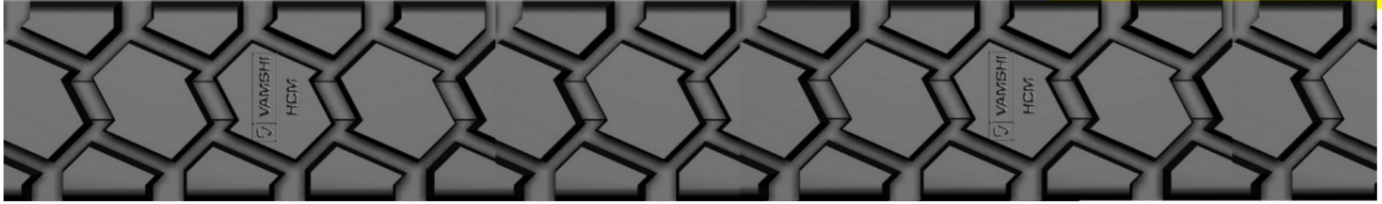


# **VAMSHI**

# **TREADS**

PRODUCT BROCHURE

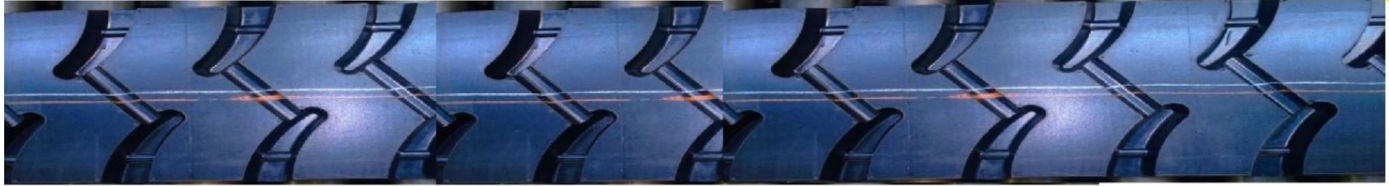
**MINES & OTR**



**Traction Characteristics:** *Rear Wheel, Excellent Traction, Good Service in Rough Terrain & Mines*

Product Code	Tread width (mm)	Tread Length (Inch)	Tread Length (mm)	Non-Skid Depth (mm)	Weight per Tread	Treads Per Roll (kgs)	Roll Weight (kgs)	For Tyre / Sizes
HCM 228-130	228	130	3300	15.90	13.25	2	26.50	11.00-R-20 11.00-X-20 12.00-X-20
HCM 228-134	228	134	3400	15.90	13.65	2	27.30	11.00-R-20 11.00-X-20 12.00-X-20
HCM 238-134	238	134	3400	15.30	14.15	2	28.30	12.00-X-20
HCM 238-148	238	148	3750	15.30	15.55	2	31.10	12.00-X-20

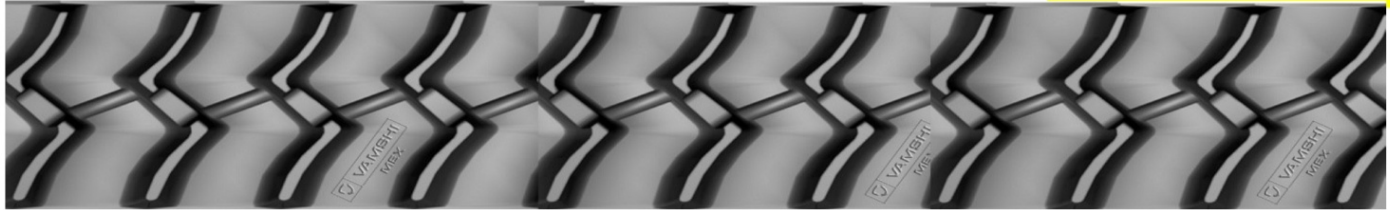
**\* Commercial Tolerance  $\pm$  2% is to be allowed**



**Traction Characteristics:** *Rear Wheel, Excellent Traction, Good Service in Rough Terrain & Mines*

Product Code	Tread width (mm)	Tread Length (Inch)	Tread Length (mm)	Non-Skid Depth (mm)	Weight per Tread	Treads Per Roll (kgs)	Roll Weight (kgs)	For Tyre / Sizes
KMC-205-128	205	128	3250	18.00	14.50	2	29.00	10.00-X-20

**\* Commercial Tolerance  $\pm$  2% is to be allowed**



**Traction Characteristics:** *Rear Wheel, Excellent Traction, Good Service in Rough Terrain & Mines*

Product Code	Tread width (mm)	Tread Length (Inch)	Tread Length (mm)	Non-Skid Depth (mm)	Weight per Tread	Treads Per Roll (kgs)	Roll Weight (kgs)	For Tyre / Sizes
MEX 205-127	205	127	3225	13.20	10.70	3	32.10	10.00-X-20
MEX 215-129	215	129	3275	16.00	13.35	2	26.70	10.00-X-20 11.00-X-20

**\* Commercial Tolerance  $\pm$  2% is to be allowed**

# MINES TRAC (MT)

MINES & OTR



**Traction Characteristics:** *Rear Wheel, Excellent Traction, Good Service in Rough Terrain & Mines*

Product Code	Tread width (mm)	Tread Length (Inch)	Tread Length (mm)	Non-Skid Depth (mm)	Weight per Tread	Treads Per Roll (kgs)	Roll Weight (kgs)	For Tyre / Sizes
MT 205-127	205	127	3225	14.00	11.05	3	33.15	10.00-X-20
MT 210-127	210	127	3225	13.80	11.45	3	34.35	10.00-X-20
MT 240-128	240	128	3250	15.00	14.05	2	28.10	11.00-X-20 12.00-R-20
MT 240-131	240	131	3325	15.00	14.40	2	28.80	11.00-X-20 12.00-R-20
MT 240-134	240	134	3400	15.00	14.70	2	29.40	11.00-X-20 12.00-R-20
MT 240-148	240	148	3750	15.00	16.20	2	32.40	12.00-X-24

**Note: MT TREAD PATTERN FOR THE UNDER MENTIONED SIZES**



MT 215-126	215	126	3195	14.00	11.50	3	34.50	10.00-X-20
MT 215-129	215	129	3280	14.00	11.80	3	35.40	10.00-X-20
MT 230-127	230	127	3225	15.00	12.75	3	38.25	10.00-X-20
MT 230-130	230	130	3308	15.00	13.05	3	39.15	10.00-R-20 10.00-X-20 11.00-R-20 11.00-X-20
MT 230-134	230	134	3400	15.00	13.40	3	40.20	10.00-R-20 10.00-X-20 11.00-R-20 11.00-X-20
MT 240-XD-135	240	135	3425	24.00	21.10	2	42.20	12.00-X-20
MT 240-XD-143	240	143	3635	24.00	22.40	2	44.80	12.00-X-24
MT 240-XD-147	240	147	3730	24.00	23.00	2	46.00	12.00-X-24

\* Commercial Tolerance  $\pm 2\%$  is to be allowed

# MINES TRAC DEEP (MTD)

MINES & OTR



**Traction Characteristics:** *Rear Wheel, Excellent Traction, Good Service in Rough Terrain & Mines*

Product Code	Tread width (mm)	Tread Length (Inch)	Tread Length (mm)	Non-Skid Depth (mm)	Weight per Tread	Treads Per Roll (kgs)	Roll Weight (kgs)	For Tyre / Sizes
MTD 205-127	205	127	3225	15.10	11.35	3	34.05	10.00-X-20
MTD 220-127	220	127	3225	16.50	13.30	2	26.60	10.00-X-20
MTD 240-132	240	132	3350	19.20	16.60	2	33.20	11.00-X-20
MTD 240-134	240	134	3400	19.20	16.85	2	33.70	12.00-X-20
MTD 240-143	240	143	3640	19.20	18.05	2	36.10	12.00-X-24
MTD 240-147	240	147	3730	19.20	18.50	2	37.00	12.00-X-24

**Note: MTD TREAD PATTERN FOR THE UNDER MENTIONED SIZES**



MTD 310-163	310	163	4140	25.00	38.20	1	38.20	14.00-X-24 14.00-X-25
-------------	-----	-----	------	-------	-------	---	-------	--------------------------

**\* Commercial Tolerance  $\pm$  2% is to be allowed**

# SUPER LUG (SL)

**MINES & OTR**



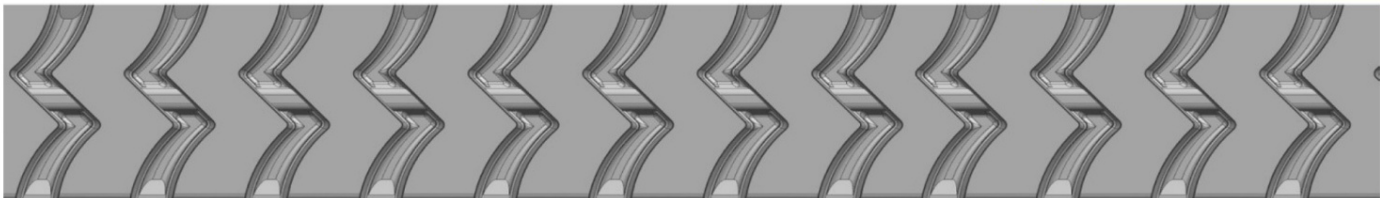
**Traction Characteristics:** *High Traction, Rear Axle, Good Performance*

Product Code	Tread width (mm)	Tread Length (Inch)	Tread Length (mm)	Non-Skid Depth (mm)	Weight per Tread	Treads Per Roll (kgs)	Roll Weight (kgs)	For Tyre / Sizes
SL 205-127	205	127	3225	15.20	11.65	3	34.95	9.00-R-20 10.00-X-20

**\* Commercial Tolerance  $\pm$  2% is to be allowed**

# SUPER LUG MINES (SLM)

**MINES & OTR**



**Traction Characteristics:** *Rear Wheel, Excellent Traction, Good Service in Rough Terrain & Mines*

Product Code	Tread width (mm)	Tread Length (Inch)	Tread Length (mm)	Non-Skid Depth (mm)	Weight per Tread	Treads Per Roll (kgs)	Roll Weight (kgs)	For Tyre / Sizes
SLM 240-148	240	148	3750	18.50	18.35	2	36.70	12.00-X-24

**\* Commercial Tolerance  $\pm$  2% is to be allowed**

## SPECIAL TREAD FOR TRACTOR

**VAMSHI BHUMIPUTRA (VBP)**

**MINES & OTR /  
TRACTOR**



**Traction Characteristics:** *Rear Wheel, Excellent Traction, Good Service in Rough Terrain & Mines*

Product Code	Tread width (mm)	Tread Length (Inch)	Tread Length (mm)	Non-Skid Depth (mm)	Weight per Tread	Treads Per Roll (kgs)	Roll Weight (kgs)	For Tyre / Sizes
VBP 390-140	390	140	3560	35.50	31.50	1	31.50	13.6-R-28 13.6-X-28

**\* Commercial Tolerance  $\pm$  2% is to be allowed**





**Traction Characteristics:** *Excellent Traction, Rear Axle, High Performance*

Product Code	Tread width (mm)	Tread Length (Inch)	Tread Length (mm)	Non-Skid Depth (mm)	Weight per Tread	Treads Per Roll (kgs)	Roll Weight (kgs)	For Tyre / Sizes
VGR 375-146	375	146	3713	27.50	30.70	1	30.70	13.00-R-24 13.00-X-24
VGR 375-153	375	153	3890	27.50	32.15	1	32.15	14.00-R-24 14.00-X-24

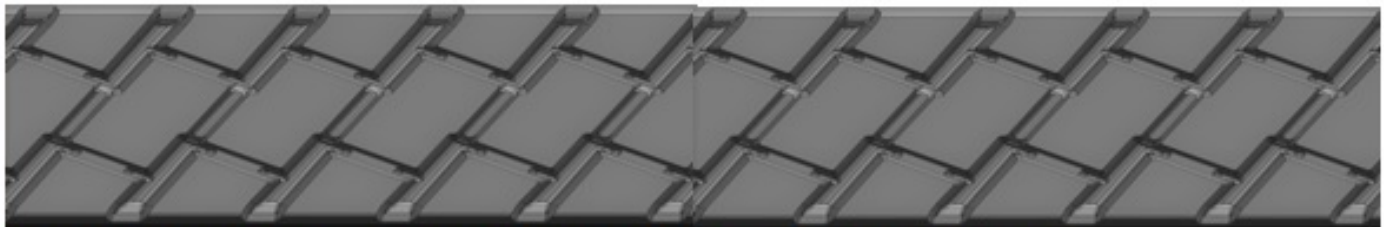
**\* Commercial Tolerance  $\pm 2\%$  is to be allowed**

**VAMSHI MINES ROCK(VMR)****MINES & OTR**

**Traction Characteristics:** *Rear Wheel, Excellent Traction, Good Service in Rough Terrain & Miines*

Product Code	Tread width (mm)	Tread Length (Inch)	Tread Length (mm)	Non-Skid Depth (mm)	Weight per Tread	Treads Per Roll (kgs)	Roll Weight (kgs)	For Tyre / Sizes
VMR 240-XD-143	240	143	3620	25.00	23.05	2	46.10	12.00-X-24
VMR 240-XD-146	240	146	3715	25.00	23.65	2	47.30	12.00-X-24

\* Commercial Tolerance  $\pm 2\%$  is to be allowed

**VAMSHI ROCK LUG (DEEP) VRL(D)****MINES & OTR**

**Traction Characteristics:** *High Traction, Rear Axle, Good Performance*

Product Code	Tread width (mm)	Tread Length (Inch)	Tread Length (mm)	Non-Skid Depth (mm)	Weight per Tread	Treads Per Roll (kgs)	Roll Weight (kgs)	For Tyre / Sizes
VRL 240-D-147	240	147	3730	22.00	21.35	2	42.70	12.00-X-24

\* Commercial Tolerance  $\pm 2\%$  is to be allowed